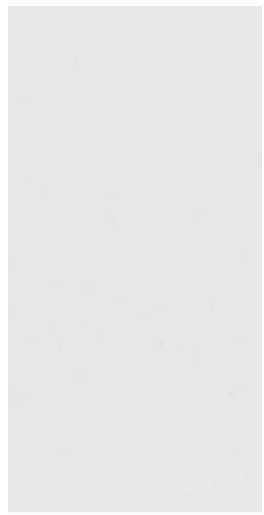
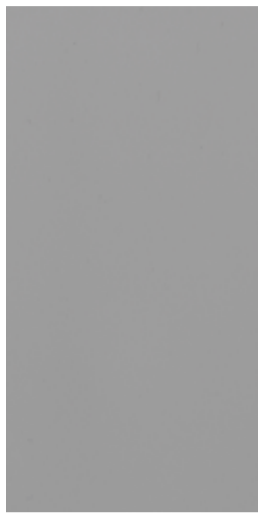


2025 EB Metallic Shiny Film - New

- **RAW MATERIAL** : Food-grade materials with imported Avient master batches for vibrant, true-to-life color.
- **METALLIC TEXTURE** : A unique pearlescent layer delivers strong metallic appeal with soft, understated color.
- **FINGERPRINT-RESISTANT** : Fingerprints leave no visible marks, achieving a "fingerprint disappearance" effect.
- **STAIN-RESISTANT** : Resistant to coffee, tea, and other stains without penetration—easily wiped clean.
- **SCRATCH-RESISTANT** : Withstands daily bumps, knocks, and wear.
- **BABY-SKIN-LIKE TEXTURE** : A gentle, skin-friendly feel that replicates the softness of baby's skin—an irreplaceable tactile experience.



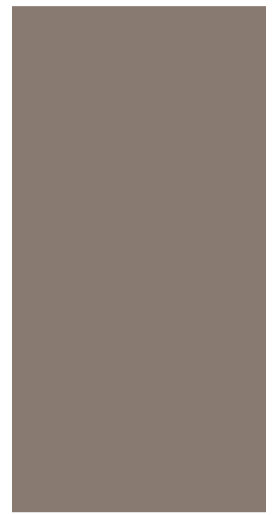
EB-JF030



EB-JF031



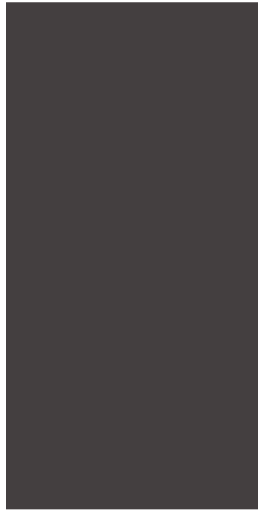
EB-JF032



EB-JF033



EB-JF034



EB-JF035



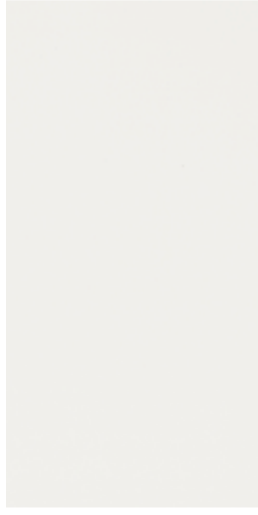
EB-JF036



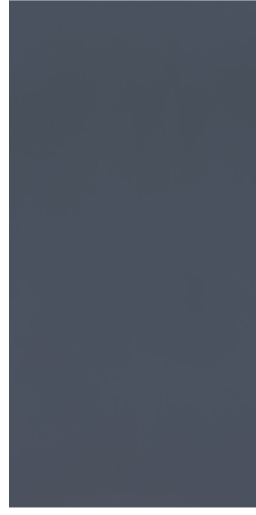
EB-JF037



EB-JF039



EB-JF1001



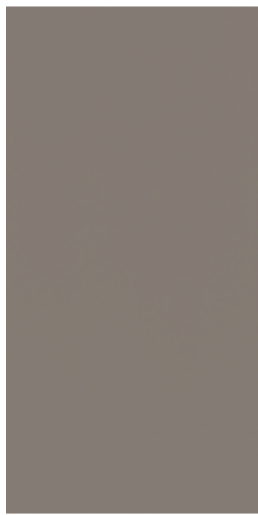
EB-JF1002



EB-JF1003



EB-JF1004



EB-JF1005



EB-JF1006



EB-JF1007



EB-JF1008



EB-JF1009



EB-JF1010

Imported raw materials have positive colors, uniform gloss, flat and stable thickness. It creates a galaxy-like diamond sparkle effect with a satin-like sheen.

- IMPORT QUALITY ASSURANCE**: Use imported raw materials from Avient to ensure stable performance from the source;
- OUTSTANDING VISUAL EFFECT**: pearl powder particles are evenly distributed to avoid local color difference, and the finished product has strong consistent appearance;
- THE INDUSTRY LEADER IN PRECISION**: the thickness tolerance is strictly controlled within 5 microns (about 1/14 of the diameter of the hair), far exceeding the 10-20 micron standard of ordinary color master batches;
- EXTREMELY FLAT SURFACE**: The product has extremely high flatness after processing, which reduces subsequent process defects and enhances the quality of final product

